

pennsylvania  
Cancer Coalition

2025

*Welcome to the*  
***Pennsylvania***  
***Cancer***  
***Coalition***

## WELCOME

*Thank you for your interest in joining the Pennsylvania Cancer Coalition (PCC). We welcome you to the PCC and look forward to your active involvement. We hope you will become an engaged member by participating in one or more of our Workgroups and Collaboratives, attending our quarterly meetings, and contributing your insight and expertise to reach our State Cancer Plan goals.*

*As a member, you will receive a bimonthly e-newsletter, letting you know what's new with the PCC and its member organizations. We will inform you of cancer-related events throughout the state, including training opportunities, conferences, and meetings. Legislative happenings will be shared along with ways that you and the people you serve can affect change on a statewide level.*

*With your help, we can make a difference in Pennsylvania by working together to reduce the burden of cancer.*

*Your PCC Co-Chairs,*

*Lyn Robertson*

*Charnita Zeigler-Johnson*

## ABOUT THE PCC

*The PCC is the official statewide cancer coalition. The PCC is an all-volunteer organization with representation from a wide variety of sectors which include public and private institutions, health systems, academia, government, non-profits, advocacy groups, and residents from across the state.*

*The PCC is committed to achieving health equity across the cancer continuum by growing and strengthening its membership to include partners and organizations who are trusted members of under-resourced and under-represented populations experiencing the highest incidences of cancer and related disparities.*

*The PCC co-chairs and workgroup leaders provide organizational structure, facilitate communication among members and guide implementation efforts through the development of annual action plans. Coalition success is dependent on a common agenda, shared goals with measurements, coordination of activities, continuous communication, and leveraged resources.*



### **Vision**

*Reduce cancer burden for all Pennsylvanians regardless of age, gender, race/ethnicity, and social, economic, and physical determinants of health.*

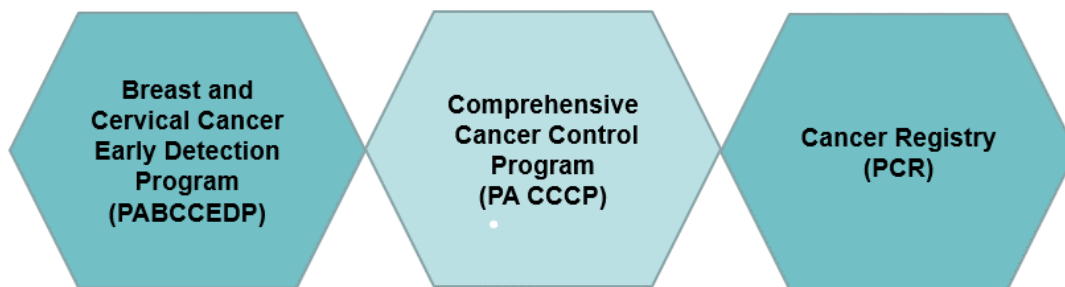
### **Mission**

*Through collaboration and collective action, decrease cancer incidence and mortality in Pennsylvania by reducing health disparities and cancer risks, detecting, and treating cancers at an earlier stage and improving the quality of life of survivors.*

## NATIONAL COMPREHENSIVE CANCER CONTROL PROGRAM (NCCCP)

The Center for Disease Control and Prevention’s [NCCCP](#) provides funds, guidance, and technical assistance to help cancer control coalitions implement effective and sustainable plans to prevent and control cancer.

### Centers for Disease Control and Prevention National Comprehensive Cancer Control Program



The three programs work collaboratively to advance health equity, eliminate preventable cancers, ensure all people get the right screening at the right time for the best outcome, and support cancer survivors in a manner that allows them to live longer, healthier lives.

---

#### Pennsylvania Department of Health’s Cancer Prevention and Control Collaborative

Comprehensive Cancer Control Program (PA CCCP), the Breast and Cervical Early Detection Program (PA-BCCEDP) and the Pennsylvania Cancer Registry (PCR)

- **Vision:** Less Cancer, Better Outcomes
- **Mission:** Decrease cancer incidence, morbidity, and mortality by using data to assess the cancer burden and inform program planning and implementation of evidence-based interventions.

#### The Pennsylvania Comprehensive Cancer Control Program

Establishes statewide goals and implements and evaluates cancer control initiatives to reduce the cancer burden. For more information [Pennsylvania Comprehensive Cancer Control Program \(PACCCP\)](#)

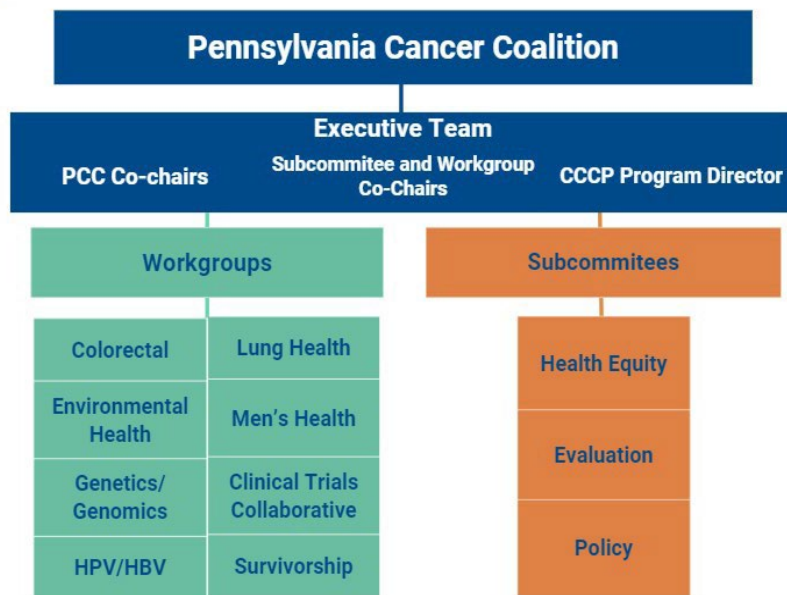
#### The Pennsylvania Cancer Registry

Collects demographic, diagnostic, stage and treatment information on patients diagnosed and treated by health care professionals in the state. For more information [Cancer Registry \(pa.gov\)](#)

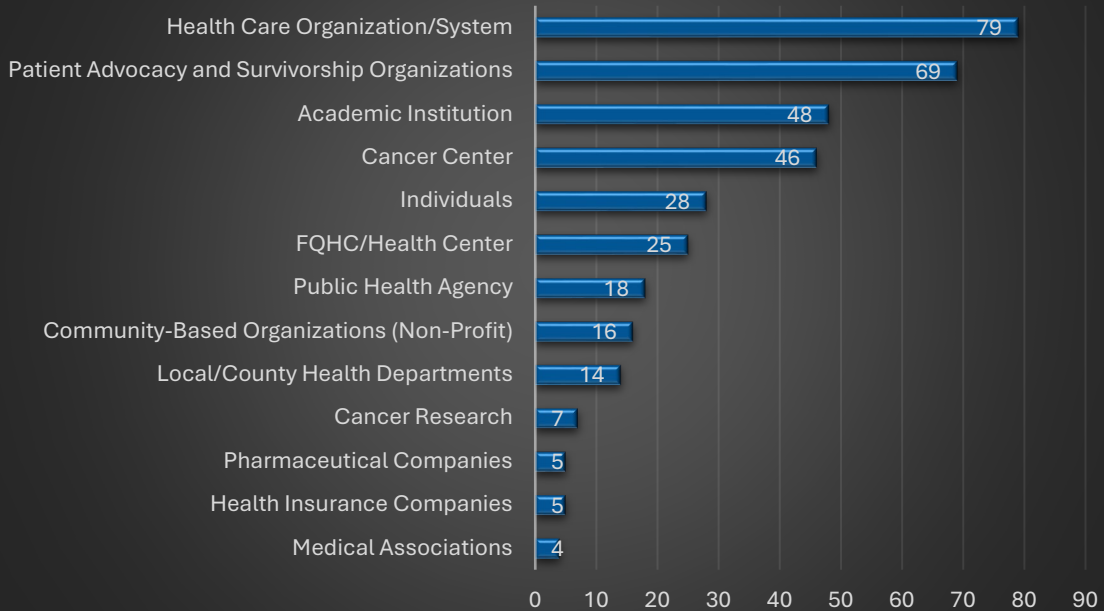
#### The Pennsylvania Breast and Cervical Cancer Early Detection Program

Provides breast and cervical cancer screening services to eligible low-income or uninsured individuals across the state. For more information [PA Breast and Cervical Cancer Early Detection Program](#)

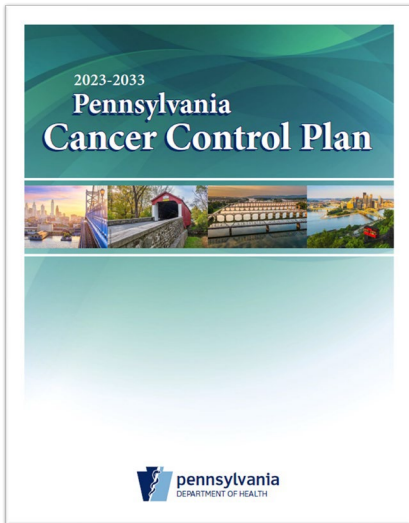
# PCC STRUCTURE AND MEMBERSHIP PROFILE



## PCC Member Sectors- January 2025



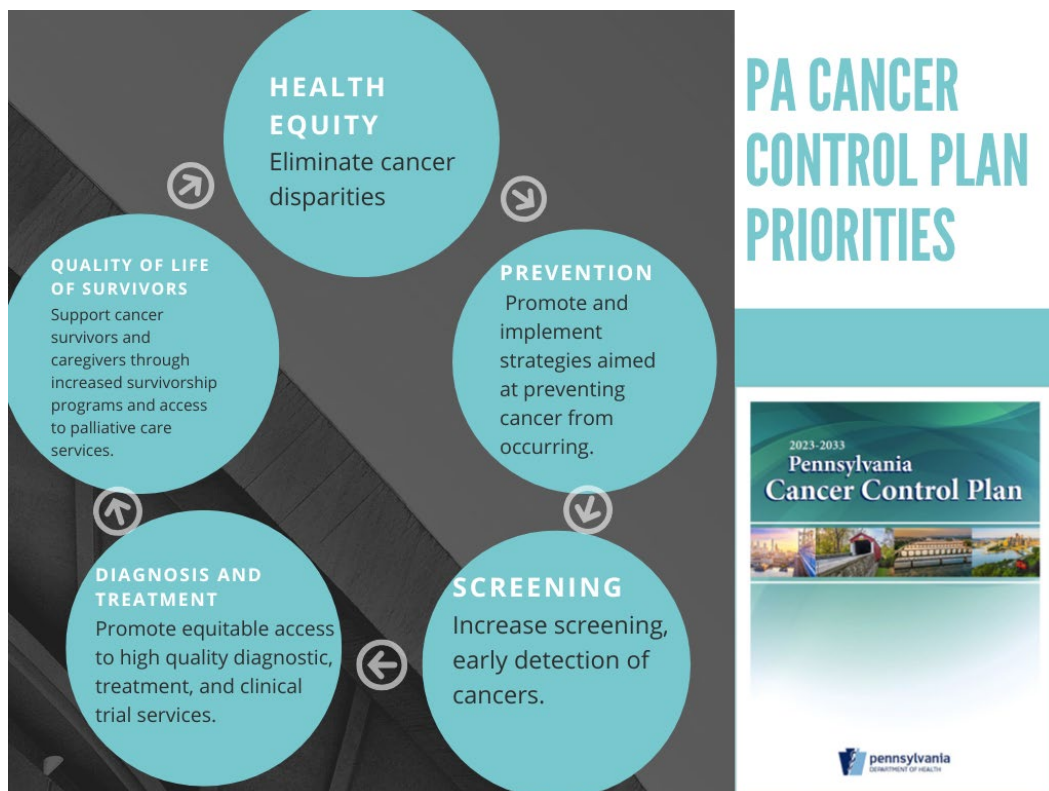
# OUR PLAN FOR COMPREHENSIVE CANCER CONTROL



[Pennsylvania 2023-2033 Cancer Control Plan](#)

## Plan Overview








The Pennsylvania Cancer Control Plan 2023-2033 is the result of ongoing collaboration among individuals and organizations committed to improving the state’s cancer incidence and mortality rates. The Plan was developed using tools and resources from the US Centers for Disease Control and Prevention (CDC) National Comprehensive Cancer Control Program (NCCCP) and with contributions from the PA Department of Health’s Division of Cancer Prevention and Control, Cancer Registry, Health Statistics, and Epidemiology. This document provides an overview of PA’s cancer burden and disparities in cancer. It also establishes cancer control priorities and actions to be taken for cancer prevention, early diagnosis, optimum treatment, and care of survivors.



## PLAN IMPLEMENTATION

To guide comprehensive cancer control efforts, the Plan will be widely disseminated to coalition partners, health systems, insurance providers, state government agencies, policy, and legislative groups. The Plan will be publicly available through the PA Department of Health and PCC websites. The PCC will convene implementation teams and workgroups to address the goals; identify lead agencies and organizations to implement evidence-based interventions; and evaluate outcomes.

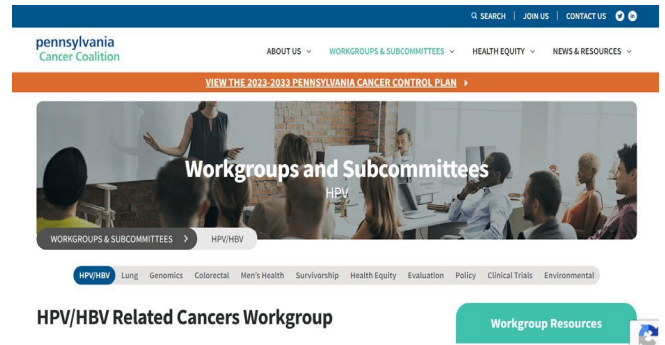
## CANCER CONTROL FRAMEWORK

	<p>PARTNERSHIPS</p>	<p>The Pennsylvania Cancer Coalition The National Comprehensive Cancer Control Program:</p> <ul style="list-style-type: none"> <li>• <a href="#">PA Comprehensive Cancer Control Program</a></li> <li>• <a href="#">PA Breast and Cervical Cancer Early Detection Program</a> (PA BCCEDP)</li> <li>• <a href="#">Pennsylvania Cancer Registry</a></li> </ul>		
	<p>QUALITY DATA</p>	<p>PA cancer registry and health statistic data, population, and survey data are collected and analyzed to identify cancer priorities, health disparities, and cancer risk information. Data is used in the development, implementation, and evaluation of the Plan.</p>		
	<p>GOALS</p>	<p>The “big picture” or favorable outcome the PCC wants to achieve related to cancer incidence and mortality.</p>		
	<p>OBJECTIVES</p>	<p>The measurable aims to achieve goals. <b>SMARTIE</b> format: <b>S</b>pecific, <b>M</b>easurable, <b>A</b>chievable, <b>R</b>ealistic, <b>T</b>ime-bound, <b>I</b>nclusive, and <b>E</b>quitable.</p>		
	<p>STRATEGIES</p>	<p>Implementation actions using <a href="#">POLICY, SYSTEMS and ENVIRONMENTAL CHANGE</a> and <a href="#">Evidence-Based Interventions (EBIs)</a>.</p> <table border="1" data-bbox="657 1386 1388 1638"> <tr> <td data-bbox="657 1386 1063 1638"> <p style="text-align: center;"><b>PSE</b></p> <p>PSE approaches can make healthy living easier and provide sustainable cancer prevention and control improvements where people live, work, play, and learn.</p> </td> <td data-bbox="1063 1386 1388 1638"> <p style="text-align: center;"><b>EBIs</b></p> <p>Science-based methods proven to improve health and prevent disease.</p> </td> </tr> </table>	<p style="text-align: center;"><b>PSE</b></p> <p>PSE approaches can make healthy living easier and provide sustainable cancer prevention and control improvements where people live, work, play, and learn.</p>	<p style="text-align: center;"><b>EBIs</b></p> <p>Science-based methods proven to improve health and prevent disease.</p>
<p style="text-align: center;"><b>PSE</b></p> <p>PSE approaches can make healthy living easier and provide sustainable cancer prevention and control improvements where people live, work, play, and learn.</p>	<p style="text-align: center;"><b>EBIs</b></p> <p>Science-based methods proven to improve health and prevent disease.</p>			
	<p>EQUITY</p>	<p>Health equity is achieved when every person can live their healthiest life, including people in communities with a higher burden of cancer.</p>		
	<p>EVALUATION</p>	<p>A systematic method for collecting, analyzing, and using data to examine the effectiveness and efficiency of programs and to contribute to continuous program improvement. <a href="#">The Framework for Evaluation in Public Health</a> is used for planning and coalition evaluation.</p>		

# COMMUNICATING WITH PCC MEMBERS TO ACHIEVE PLAN GOALS AND OBJECTIVES

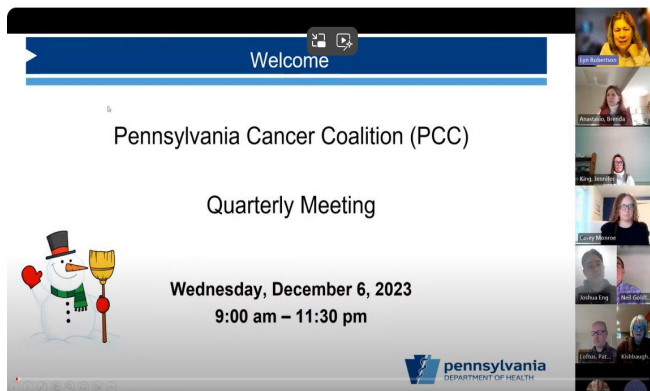
## PCC Workgroup Information

Access the [PCC Website](#) where you can find information about the Workgroups and Collaborations. Each workgroup and collaboration have a web page where you can find the mission, Action Plan updates, co-chair information, and archived meeting notes.



## Quarterly Member PCC Meetings

Join us for our quarterly meetings that provide an opportunity for members to share ideas on cancer implementation strategies, report on cancer plan activities, and feature a topic in cancer prevention and control. Meeting attendees will learn about cancer-related activities happening across the state, and receive helpful information, resources, and best practices to reduce the state's cancer burden.



## PCC E-Newsletter

A bimonthly e-newsletter created for the coalition related to the State Cancer Plan, including health promotion articles, funding opportunities, and meetings and trainings of interest.

Do you have information to share? Contact [jennifekin@pa.gov](mailto:jennifekin@pa.gov)

<p><b>Pennsylvania Cancer Coalition</b> January Newsletter</p>	
<p><b>January 2025</b></p>	
<p>Contact Us:</p> <p>Brenda Anastasio banastasio@pa.gov Workgroups: Policy, Survivorship, HPV-HBV</p> <p>April Barry abarrry@pa.gov Workgroups: Colorectal, Clinical Trials, Genetics/Genomics, Evaluation</p> <p>Jennifer King jennifekin@pa.gov Workgroups: Lung Health, Survivorship, Health Equity</p> <p>Patrick Loftus ploftus@pa.gov</p>	<p><b>COALITION NEWS &amp; ANNOUNCEMENTS</b></p> <p><b>The Next PCC Quarterly meeting will be held on March 13, 2025, at 9:00 am.</b></p> <p><b>If you weren't able to attend the PCC December 2024 Quarterly meeting, you can view it here:</b>  <a href="#">Pennsylvania Cancer Coalition December 2024 Quarterly Meeting 20241219_164145 Meeting Recording</a></p> <p>You can view previous PCC Quarterly Meetings on our YouTube Channel: <a href="#">Pennsylvania Cancer Coalition - YouTube</a></p> <p>You can view the 2025 PCC meeting schedule <a href="#">HERE</a></p> <p>Effective immediately, workgroup meeting minutes should be sent to Satoko Hariyama <a href="mailto:shariyama@pa.gov">shariyama@pa.gov</a> to be uploaded to the PCC website, we are <b>no longer</b> using <a href="mailto:RA-DHCAB_PCC@pa.gov">RA-DHCAB_PCC@pa.gov</a>.</p> <p>Visit <a href="#">Pennsylvania Cancer Coalition — PA Cancer Control Plan, Resources, Research, Membership (nancancercoalition.org)</a> to</p>



# THANK YOU!

Thank you for joining us! As a PCC member, you can provide guidance on many of the cancer issues that face Pennsylvania.

For more information

[Contact the Pennsylvania Cancer Coalition](#)

The logo for the Pennsylvania Cancer Coalition is centered in a white rectangular box with a dark blue border. The word "pennsylvania" is written in a dark blue, lowercase, sans-serif font. Below it, the words "Cancer Coalition" are written in a green, lowercase, sans-serif font.

pennsylvania  
Cancer Coalition